



## SNOW BRACKET™ E SHORT W/DISC

### DESCRIPTION

- Designed for simulated slate, shake, asphalt shingle and metal roofs
- Can be powder coated to match roofing material color
- Overall dimensions: 8-1/8" L X 3" W X 2-7/8" H

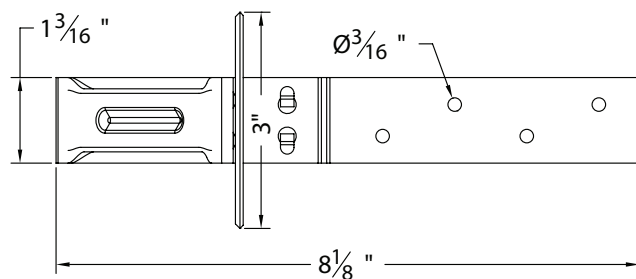
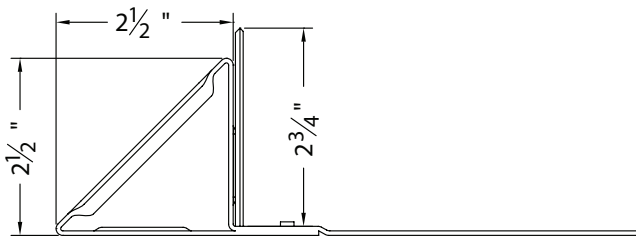
### MATERIALS

- Steel :: 16 ga (ASTM A879)
- Copper :: 48 oz (ASTM B152)
- Cor-Ten® :: 16 ga (ASTM A606)
- Stainless Steel :: 16 ga (ASTM A240)
- Aluminum :: .063" (H32 - ASTM B209)

### COLORS/FINISHES

- Electro-galvanized steel
- Hot-dipped galvanized steel
- Mill finish Aluminum
- Mill finish Copper
- Mill finish Cor-Ten®
- Powder coating available in many colors visit <http://trasnowandsun.com/color-chart/> to see color chart

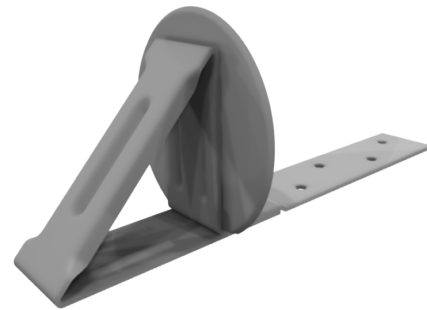
**NOTE:** Due to specific job conditions, TRA Snow and Sun will only warranty a snow retention system/layout that has been designed by TRA Snow and Sun.



### DIMENSIONS

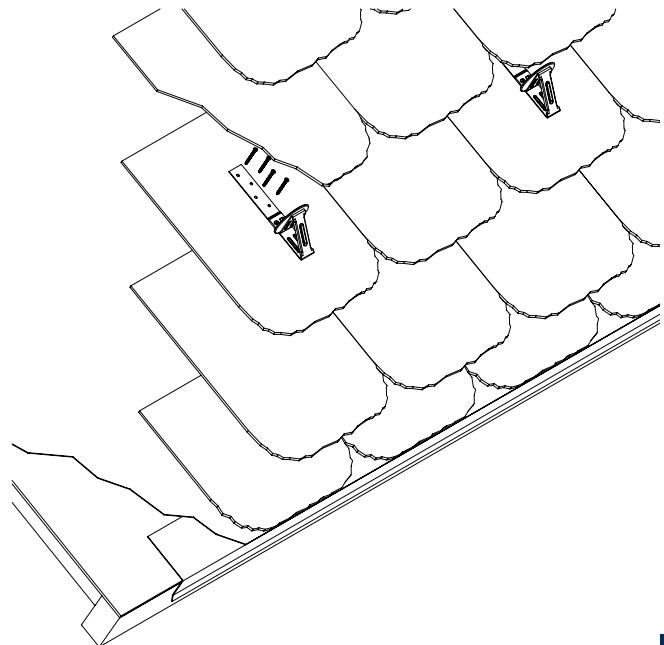
DO NOT SCALE

\*Dimensions shown are in inches.



### FOR NEW CONSTRUCTION

**USED ON: SIMULATED SLATE, SHAKE, ASPHALT SHINGLE & METAL ROOFS**



Bracket to be installed using (4) #8 stainless steel screws or roofing nails fastened through roofing material and sheathing below.

### INSTALLATION

DO NOT SCALE

**SNOW RETENTION SYSTEMS**