

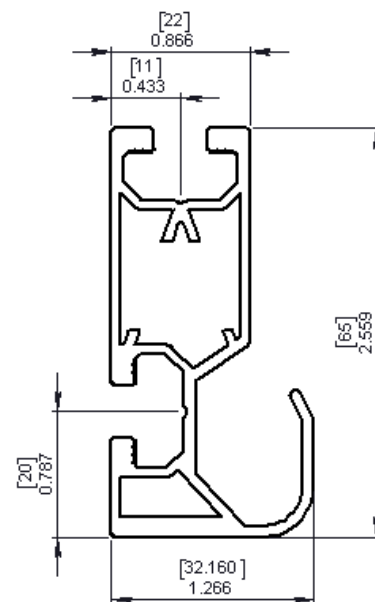
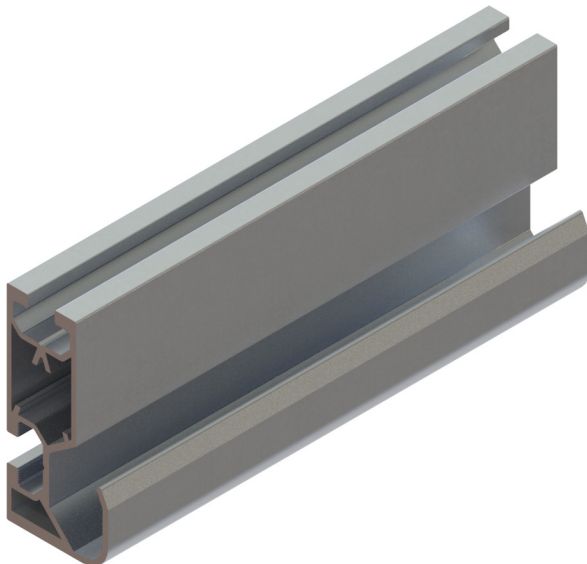


SOLAR RAIL PLUS

TECHNICAL SPECIFICATIONS

Part Number	74030801 (varies based on length see chart below)
Material	6005A-T6 Aluminum / 6005A-T5 Aluminum
Finishes	<ul style="list-style-type: none"> • Mill finish • Black Anodized (upon request)
Rail Spans	<ul style="list-style-type: none"> • Please ask our Sales Department
Available Lengths	<ul style="list-style-type: none"> • 2'through 20' in 2 ft increments • Standard length: 10'
Companion Parts	<ul style="list-style-type: none"> • Sliding Block • Cross Connector • Socket Head Cap Screw • End Cap • Rail Connector Fixed and Flexible • All Mid and End Clamps (including glass panel clamps) • All TRA Snow and Sun Flush Mount Systems, Elevated Systems, Ballasted Systems, Ground Mount Systems, Awning Systems
Compatible Solar Modules	All major brands

NOTE: Dimensions shown are in inches unless otherwise noted



PART #	LENGTH	PART #	LENGTH
74031020	20'6"	74030840 BLK	20'6"
74031014	14'	74030830 BLK	14"
74031010	10'3"	74030820 BLK	10'3"