



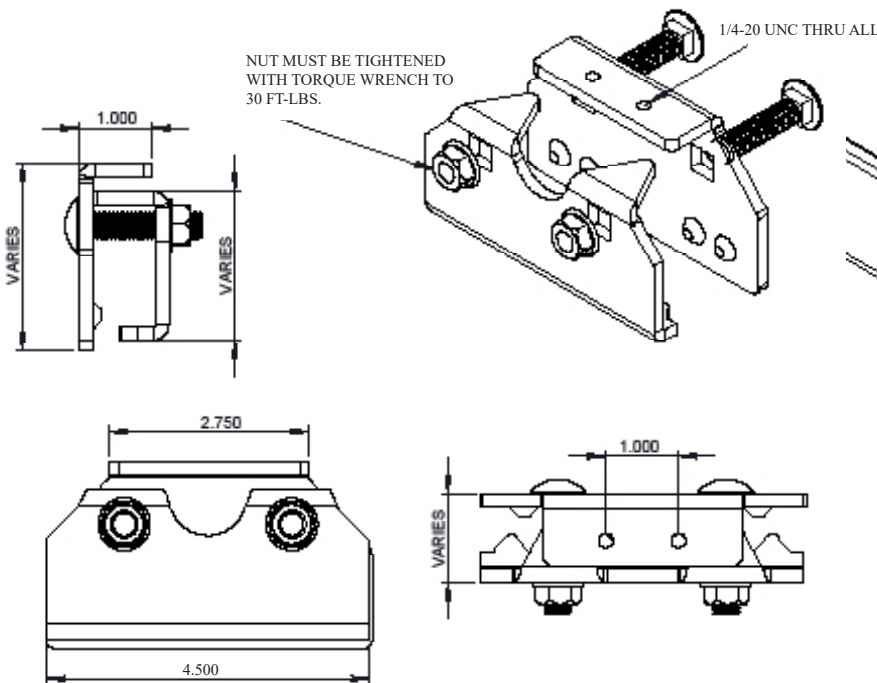
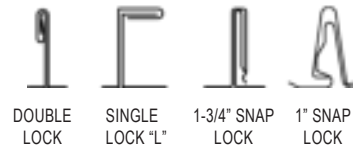
UTILITY CLAMP-ON

TECHNICAL SPECIFICATIONS

Description	<ul style="list-style-type: none"> Designed for standing seam metal roofs Available rib types: Double Lock, Single Lock, 1-3/4" Snap Lock, and 1" Snap Lock Allows for full installation without any penetration of the roof surface Overall dimensions: 4.5"L X VAR"W X VAR"H (Width & Height of clamp varies based on rib type) Mounting surface dimension: 1" x 2.75" 1/4-20 bolt (2) - required (not provided) Weight: 1.35 pounds Powder coating available in many colors visit http://trasnowandsun.com/color-chart/ to see color chart
Material	<ul style="list-style-type: none"> Steel: 3/16" (ASTM A36)
Finishes	<ul style="list-style-type: none"> Mill finish steel (Raw) Zinc plated steel (ASTM B633, Type II, SC3)
Companion Parts	<ul style="list-style-type: none"> Carriage Bolts (included in assembly)
Allowable Load (lbs)	<ul style="list-style-type: none"> Approximately 800 lb shear load
Warranty	<ul style="list-style-type: none"> No warranty offered

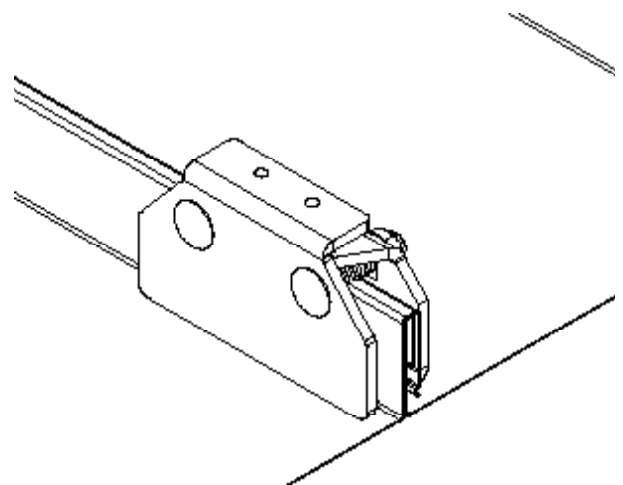


USED ON: STANDING SEAM METAL



DIMENSIONS DO NOT SCALE

NOTE: Dimensions shown are in inches. Height varies based on standing seam rib type and height.



INSTALLATION:
CLAMP THE BRACKET TO THE RIB BY USING A TORQUE WRENCH WITH 30 FT-LBS. OF PRESSURE APPLIED TO EACH BOLT.

INSTALLATION DO NOT SCALE

ROOF ACCESSORY SYSTEMS