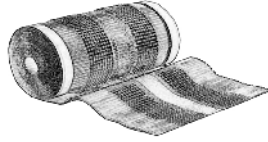




07 72 00

TRA SNOW & SUN

ROOF ACCESSORY SYSTEMS



TILE VENT

ICC ESR-1787

APPLICATION STEPS

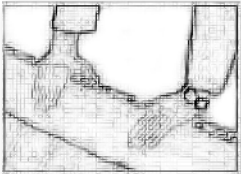
General Information TileVent™ should overlap 2 inches. Roof tile must be clean and dry.

STEP 1



Center TileVent™ on top of roof nailing board. Staple or nail the TileVent™ every 12 inches down hip or ridge nailing board.

STEP 2



Form the TileVent™ to the tile roof surface. Be careful that the ventilation area does not press too tight to the surface nailing board preventing proper airflow. When venting a hip on a tile roof system you can vent from eave to ridge. However, when venting the attic through a hip you can only cut the sheathing the top third of the hip.

STEP 3



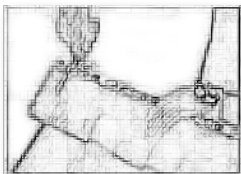
Remove protective strip from adhesive tape.

STEP 4



Press TileVent™ in pans of each tile. TileVent™ can elongate 30% from barrel to pan. Take care that the edge area of the TileVent™ is thoroughly pressed to tile. The corrugation of the TileVent™ should become flat as the material is pressed into the tile. Then use a rubber roller for optimal adhesion.

STEP 5



Cut off the excess amount of the TileVent™ at the end of the hip or ridge with a knife or sheet metal shears. The excess material can be used on the next project.



The perforations and edge of TileVent™ are extremely sharp. Please wear gloves to eliminate the possibility of cuts and scrapes.

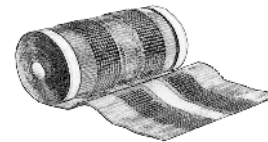
1657 South 580 East
American Fork, UT 84003



07 72 00

TRA SNOW & SUN

ROOF ACCESSORY SYSTEMS



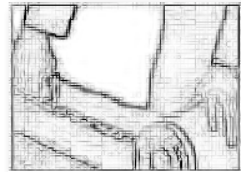
TILE VENT

ICC ESR-1787

APPLICATION STEPS

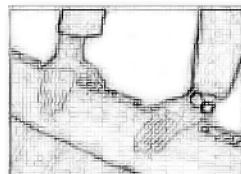
General Information TileVent™ should overlap 2 inches. Roof tile must be clean and dry.

STEP 1



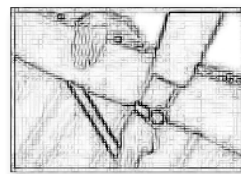
Center TileVent™ on top of roof nailing board. Staple or nail the TileVent™ every 12 inches down hip or ridge nailing board.

STEP 2



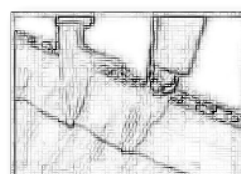
Form the TileVent™ to the tile roof surface. Be careful that the ventilation area does not press too tight to the surface nailing board preventing proper airflow. When venting a hip on a tile roof system you can vent from eave to ridge. However, when venting the attic through a hip you can only cut the sheathing the top third of the hip.

STEP 3



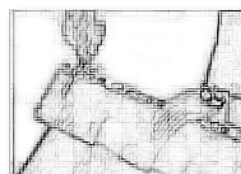
Remove protective strip from adhesive tape.

STEP 4



Press TileVent™ in pans of each tile. TileVent™ can elongate 30% from barrel to pan. Take care that the edge area of the TileVent™ is thoroughly pressed to tile. The corrugation of the TileVent™ should become flat as the material is pressed into the tile. Then use a rubber roller for optimal adhesion.

STEP 5



Cut off the excess amount of the TileVent™ at the end of the hip or ridge with a knife or sheet metal shears. The excess material can be used on the next project.



The perforations and edge of TileVent™ are extremely sharp. Please wear gloves to eliminate the possibility of cuts and scrapes.

1657 South 580 East
American Fork, UT 84003