



SNOW BRACKET™ S

DESCRIPTION

- Designed for use with Asphalt Shingles, Cedar Shingles, Slate, Simulated Slate and Wood Shakes
- Requires four 10 D Galvanized Nails
- Can be manufactured in custom lengths
- Bracket fastens to roof sheathing material
- Can be powder coated to match roofing material color
- Overall dimensions: 16.16"L X 3"W X 4"H

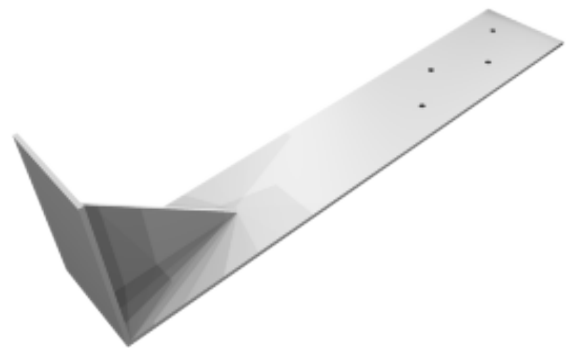
MATERIALS

- Zinc Coated Steel: 10 ga (ASTM A653)

COLORS/FINISHES

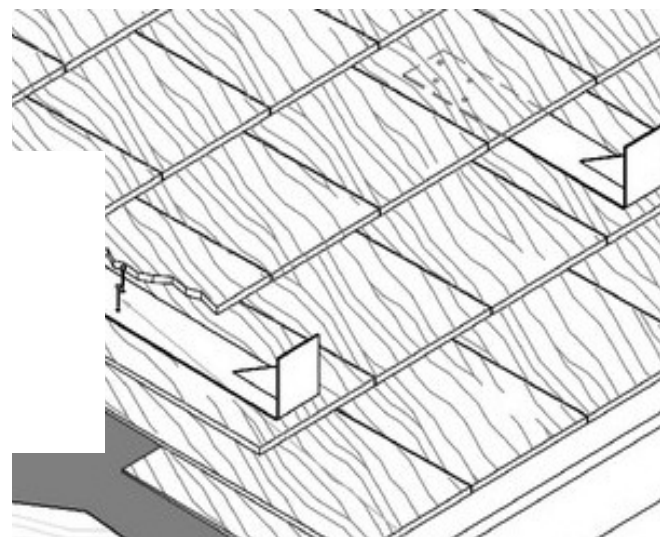
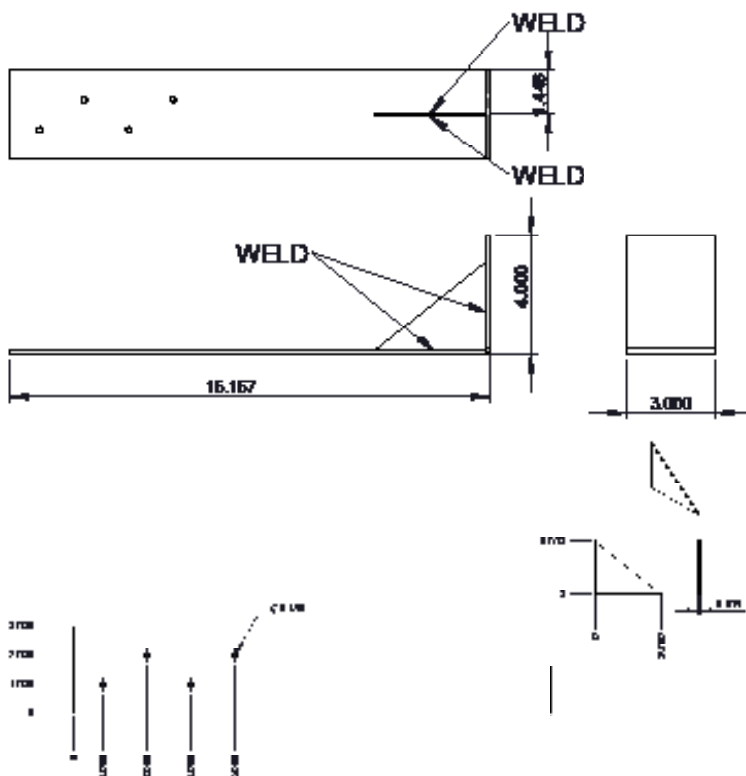
- Zinc Plated
- Powder coating available in many colors visit <http://trasnowandsun.com/color-chart/> to see color chart

NOTE: Due to specific job conditions, TRA Snow and Sun will only warranty a snow retention system/layout that has been designed by TRA Snow and Sun.



FOR NEW CONSTRUCTION

USED ON: ASPHALT SHINGLES, CEDAR SHINGLES, SLATE, SIMULATED SLATE AND WOOD SHAKES



INSTALLATION: SNOW BRACKET IS INSTALLED WITH (4) 10 D GALVANIZED NAILS THAT MUST PENETRATE THE SHEATHING WITH THE WELD END OF THE BRACKET FACING AT THE EAVE END OF SHINGLE AND UPPER END UNDER SHINGLE UNDER COURSE ABOVE.

DIMENSIONS
DO NOT SCALE