



## SNOW BRACKET™ F EXTENDED - APEX

### DESCRIPTION

- Designed for slate, simulated slate, wood shake and cedar shingles
- Installed using (5) 2" roofing nails or #8 stainless steel screws that must penetrate the sheathing
- Can be powder coated to match roofing material color
- Overall dimensions: 19.53" L X 1.19" W X 3" H
- Can be manufactured in custom lengths

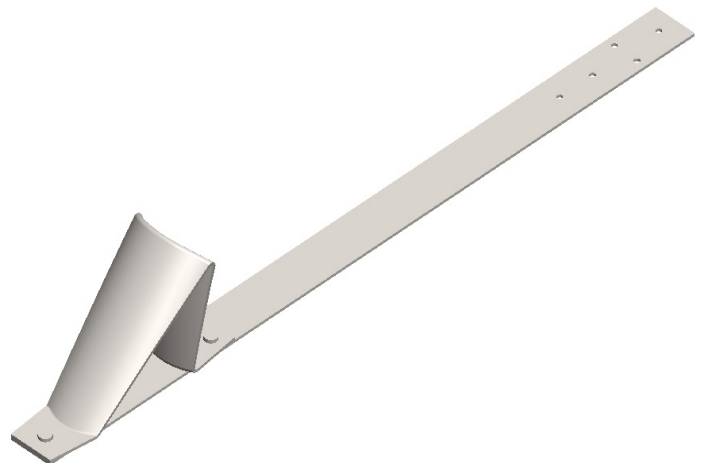
### MATERIALS

- Zinc Coated Steel: 16 ga (ASTM A653)
- Copper: 48 oz (ASTM B152)
- Stainless Steel: 16 ga (ASTM A240)

### COLORS/FINISHES

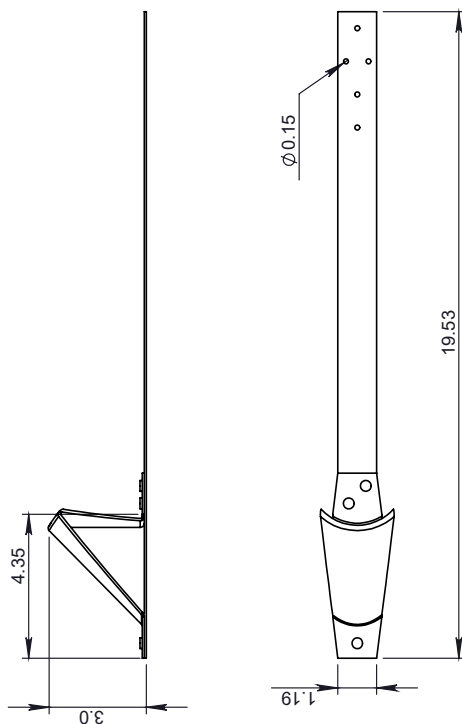
- Zinc Plated
- Powder coating available in many colors visit <http://trasnowandsun.com/color-chart/> to see color chart

**NOTE:** Due to specific job conditions, TRA Snow and Sun will only warranty a snow retention system/layout that has been designed by TRA Snow and Sun.

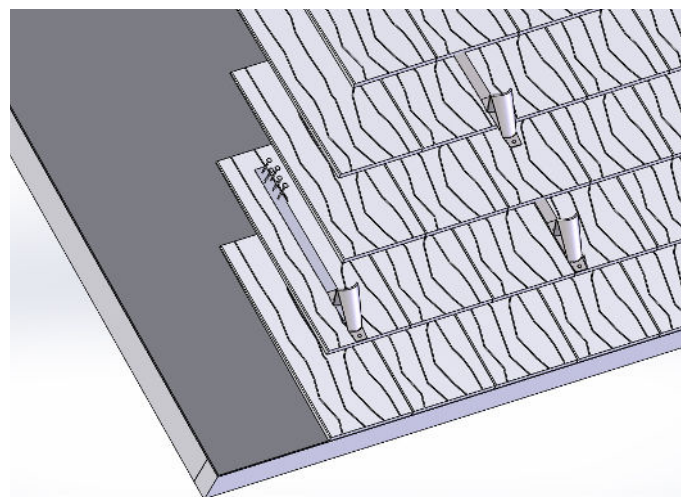


**FOR NEW CONSTRUCTION**

**USED ON: CEDAR SHINGLES, WOOD SHAKES, SLATE, AND SIMULATED SLATE**



**DIMENSIONS**  
DO NOT SCALE



### INSTALLATION:

Bracket placed with the triangular end of bracket at the eave of roofing material and upper end under roofing material in course above. Bracket to be installed using (5) roofing nails or #8 stainless steel screws that must penetrate through the roofing material and sheathing below.

**SNOW RETENTION SYSTEMS**