



## SNOW BRACKET™ E SHORT - CLASSIC

### DESCRIPTION

- Designed for simulated slate, shake, asphalt shingle and metal roofs
- Can be powder coated to match roofing material color
- Overall dimensions: 8-1/8" L X 1-3/16" W X 2-7/8" H

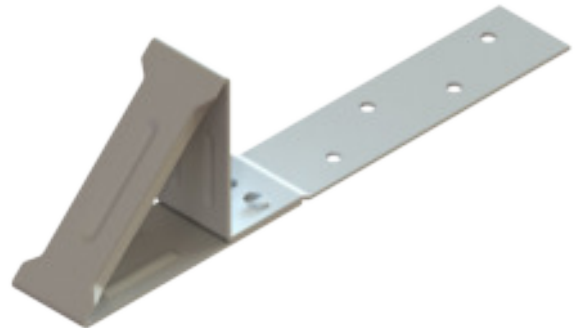
### MATERIALS

- Zinc Coated Steel: 16 ga (ASTM A653)
- Copper: 48 oz (ASTM B152)
- Stainless Steel: 16 ga (ASTM A240)

### COLORS/FINISHES

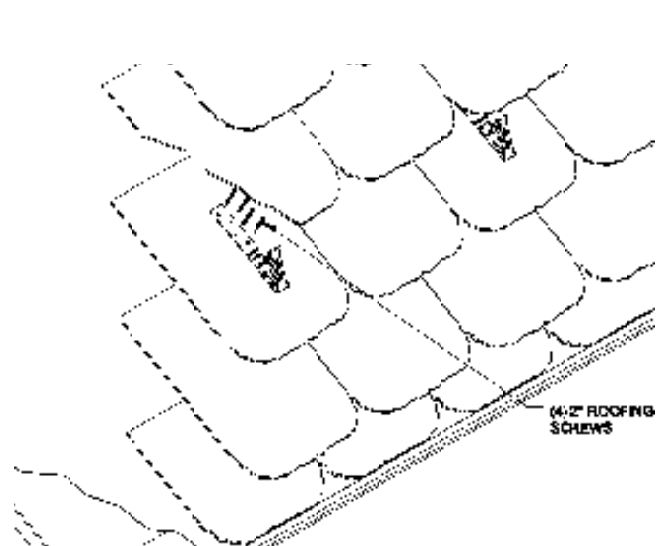
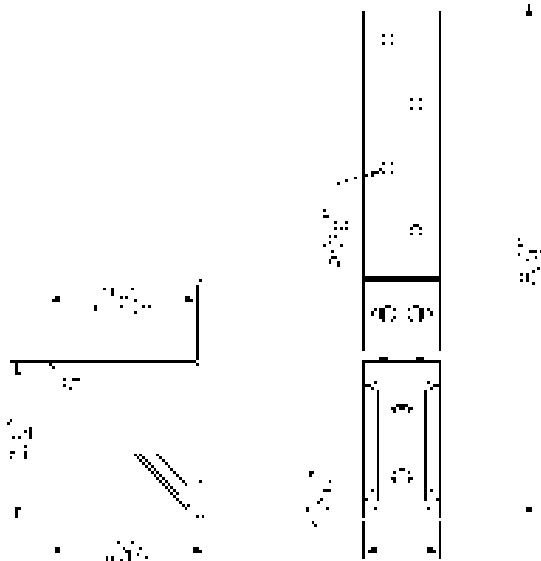
- Zinc Plated
- Powder coating available in many colors visit <http://trasnowandsun.com/color-chart/> to see color chart

**NOTE:** Due to specific job conditions, TRA Snow and Sun will only warranty a snow retention system/layout that has been designed by TRA Snow and Sun.



### FOR NEW CONSTRUCTION

**USED ON: SIMULATED SLATE, SHAKE, ASPHALT SHINGLE & METAL ROOFS**



Bracket to be installed using (4) #8 stainless steel screws or roofing nails fastened through roofing material and sheathing below.

**DIMENSIONS**  
DO NOT SCALE