

SNOW BRACKET™ BRAVA FLAT TILE - APEX

DESCRIPTION

- Designed for use with Brava's flat tile
- Install using (5) roofing nails or #8 stainless steel screws; all fasteners must fully penetrate the sheathing
- All roof penetrations that go through the underlayment are required to be flashed or sealed
- Can be powder coated to match roofing material color
- Overall dimensions: 15.27" L X 2.26" W X 3.71" H

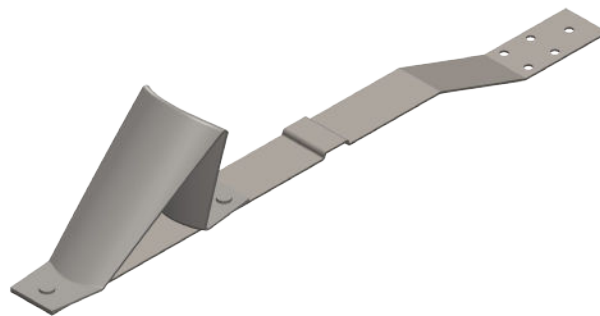
MATERIALS

- Zinc Coated Steel: 16 ga (ASTM A653)

COLORS/FINISHES

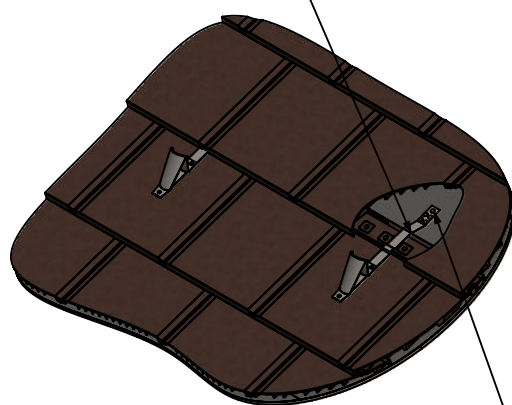
- Zinc Plated
- Powder coating available in many colors visit <http://trasnowandsun.com/color-chart/> to see color chart

NOTE: Due to specific job conditions, TRA Snow and Sun will only warranty a snow retention system/layout that has been designed by TRA Snow and Sun.

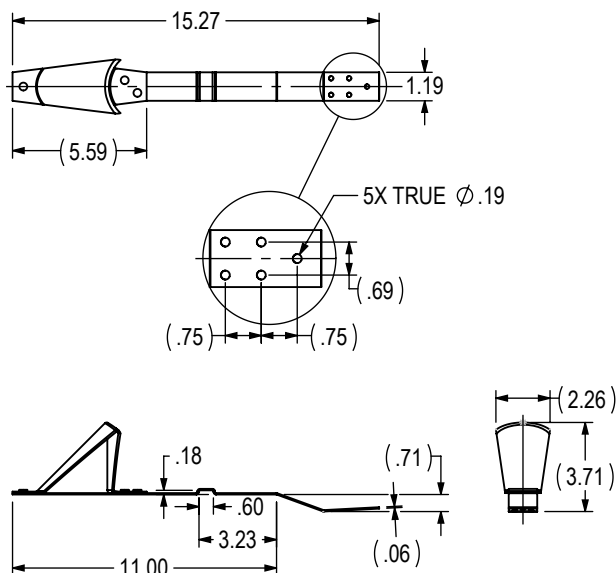


FOR NEW CONSTRUCTION USED ON: BRAVA'S FLAT TILE

PLACE THE SNOW BRACKET CENTERED ON THE TILE, WITH THE ANGLED STEP AT THE UPSLOPE EDGE OF THE TILE, SO THE BRACKET'S BUMP STEP AND THE TILE'S BUMP STEP ARE ALIGNED.



INSTALL WITH FIVE (5)
1.5" LONG FASTENERS



DIMENSIONS
DO NOT SCALE

INSTALLATION:

Place the snow bracket centered on the tile, with the angled step positioned at the upslope edge of the tile. Align the bracket's raised step with the tile's raised step, then secure the bracket using five (5) fasteners with a minimum length of 1.5".

SNOW RETENTION SYSTEMS