

SNOW BLOCKER 1 CORRUGATED (SHEATHING)

DESCRIPTION

- Designed for use with exposed fastener on corrugated metal roofing panel
- Installed using (5) #14 structural screws (recommended fasteners sold separately)
- Designed for 1.0" OD tube
- Can be powder coated to match roofing material color
- Ice Flags (recommended)
- Butyl applied under the snow blocker (optional)
- Overall dimensions: 4.45" L X 1.99" W X 4.19" H

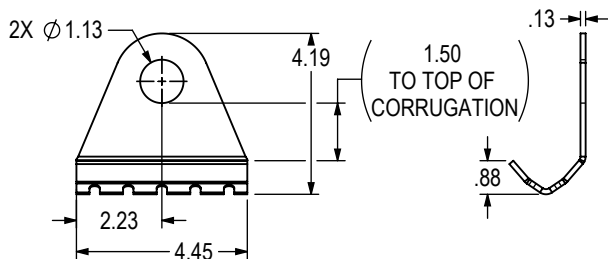
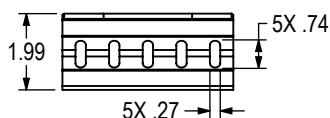
MATERIALS

- Steel: 3/16" (ASTM A1011 & ASTM A36)
- Weathering Steel (known as CORTEN®): 3/16" (ASTM A588)
- Stainless Steel: 7 gauge (ASTM A304)

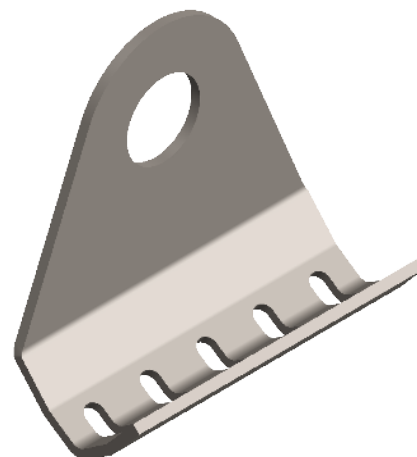
COLORS/FINISHES

- Uncoated Steel
- Zinc Coated
- Powder coating available in many colors visit <http://trasnowandsun.com/color-chart/> to see color chart

NOTE: Due to specific job conditions, TRA Snow and Sun will only warranty a snow retention system/layout that has been designed by TRA Snow and Sun.



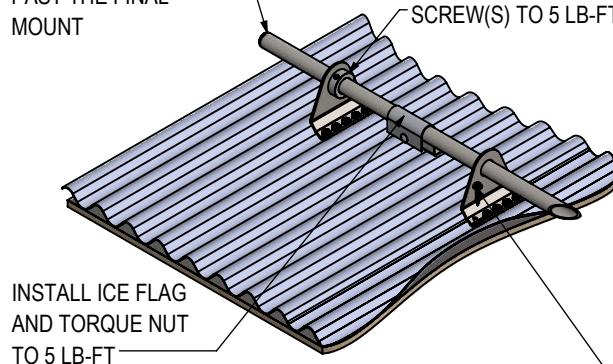
DIMENSIONS
DO NOT SCALE



USED ON: CORRUGATED METAL PANEL FOR NEW CONSTRUCTION OR RETROFIT

TUBE(S) MUST NOT EXTEND MORE THAN 6" PAST THE FINAL MOUNT

PLACE COLLAR(S) INSIDE OF THE MOUNT AT THE END OF EACH FENCE SECTION. TORQUE SET SCREW(S) TO 5 LB-FT



INSTALL ICE FLAG AND TORQUE NUT TO 5 LB-FT

INSTALL FIVE #14 SCREWS PER SNOW BLOCKER, KEEPING THE SNOW BLOCKER FIN VERTICAL.

INSTALLATION INSTRUCTIONS:

Align the Snow Blocker according to the TRA-designed layout. Flashing/waterproofing brackets as necessary (proper flashing techniques and waterproofing methods not provided, please consult with local waterproofing codes). Install using five #14 screws per snow blocker, keeping the snow blocker fin vertical. All screws must fully penetrate the sheathing.

After installation, flashings may be fabricated and installed at the installer's discretion based on site-specific needs. All roof penetrations through the underlayment must be properly flashed or sealed to maintain the integrity of the roofing system. For added protection, TRA Snow & Sun offers an optional butyl that can be applied beneath the Snow Blocker.