



SNOW BLOCKER 2 (BLOCKING)

USED ON: MOST ROOF TYPES NEW CONSTRUCTION OR RETROFIT

DESCRIPTION

- Fastens to blocking
- Installed using (4) #14 structural screws (recommended fasteners sold separately)
- Can be powder coated to match roofing material color
- Ice Flags (recommended)
- Butyl applied under the snow blocker (optional)
- Designed for 1.0" OD tube
- Overall dimensions: 4.45" L X 1.75" W X 5.32" H

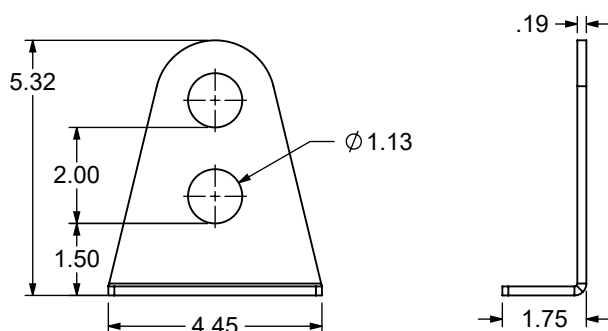
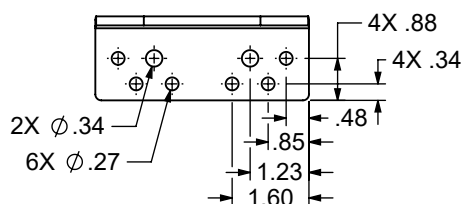
MATERIALS

- Steel: 3/16" (ASTM A1011 & ASTM A36)
- Copper: 1/4" (ASTM B152)
- Weathering Steel (known as CORTEN®): 3/16" (ASTM A588)
- Stainless Steel: 7 gauge (ASTM A304)

COLORS/FINISHES

- Uncoated Steel
- Zinc Coated
- Powder coating available in many colors visit <http://trasnowandsun.com/color-chart/> to see color chart

NOTE: Due to specific job conditions, TRA Snow and Sun will only warranty a snow retention system/layout that has been designed by TRA Snow and Sun.



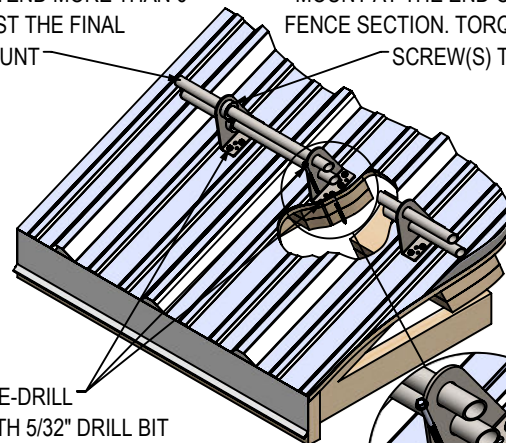
DIMENSIONS
DO NOT SCALE



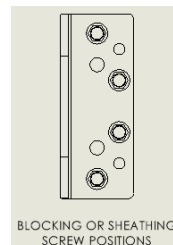
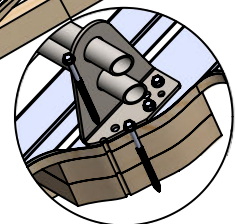
INSTALLATION:

TUBE(S) MUST NOT
EXTEND MORE THAN 6"
PAST THE FINAL
MOUNT

PLACE COLLAR(S) INSIDE OF THE
MOUNT AT THE END OF EACH
FENCE SECTION. TORQUE SET
SCREW(S) TO 5 lb-ft



PRE-DRILL
WITH 5/32" DRILL BIT
AND INSTALL FOUR
#14 STRUCTURAL SCREWS
PER SNOW BLOCKER, IN PATTERN
SHOWN IN DETAIL.



Align the Snow Blocker according to the TRA-designed layout. Pre-drill each hole using a 5/32" drill bit. Flashing/waterproofing brackets as necessary (proper flashing techniques and waterproofing methods not provided, please consult with local waterproofing codes). Install the Snow Blocker with four #14 structural screws with a 3" minimum depth structure embedment per Snow Blocker, in pattern shown in detail.

After installation, flashings may be fabricated and installed at the installer's discretion based on site-specific needs. All roof penetrations through the underlayment must be properly flashed or sealed to maintain the integrity of the roofing system. For added protection, TRA Snow & Sun offers an optional butyl that can be applied beneath the Snow Blocker.

SNOW RETENTION SYSTEMS