



SNOW BLOCKER 1 (RAFTER)

USED ON: MOST ROOF TYPES NEW CONSTRUCTION OR RETROFIT

DESCRIPTION

- Fastens to rafter or truss
- Installed using (4) #14 structural screws (recommended fasteners sold separately)
- Can be powder coated to match roofing material color
- Ice Flags (recommended)
- Butyl applied under the snow blocker (optional)
- Designed for 1.0" OD tube
- Overall dimensions: 4.45" L X 1.75" W X 3.32" H

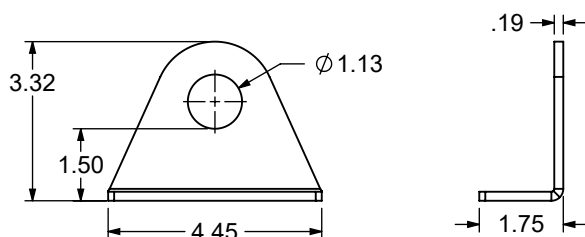
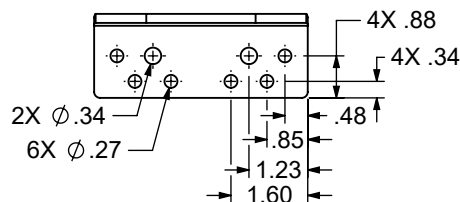
MATERIALS

- Steel: 3/16" (ASTM A1011 & ASTM A36)
- Copper: 1/4" (ASTM B152)
- Weathering Steel (known as CORTEN®): 3/16" (ASTM A588)
- Stainless Steel: 7 gauge (ASTM A304)

COLORS/FINISHES

- Uncoated Steel
- Zinc Coated
- Powder coating available in many colors visit <http://trasnowandsun.com/color-chart/> to see color chart

NOTE: Due to specific job conditions, TRA Snow and Sun will only warranty a snow retention system/layout that has been designed by TRA Snow and Sun.



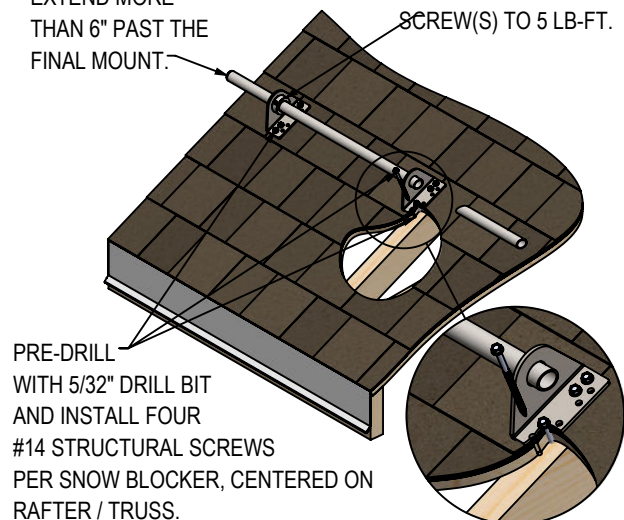
DIMENSIONS
DO NOT SCALE



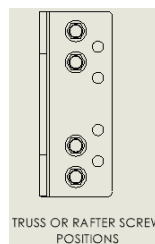
INSTALLATION:

PLACE COLLAR(S) INSIDE OF THE MOUNT AT THE END OF EACH FENCE SECTION. TORQUE SET SCREW(S) TO 5 LB-FT.

TUBE(S) MUST NOT EXTEND MORE THAN 6" PAST THE FINAL MOUNT.



PRE-DRILL WITH 5/32" DRILL BIT AND INSTALL FOUR #14 STRUCTURAL SCREWS PER SNOW BLOCKER, CENTERED ON RAFTER / TRUSS.



Align the Snow Blocker according to the TRA-designed layout, ensuring that the mounting holes are centered directly over a rafter or truss. Pre-drill each hole using a 5/32" drill bit following the image pattern. Flashing/ waterproofing brackets as necessary (proper flashing techniques and waterproofing methods not provided, please consult with local waterproofing codes). Install the Snow Blocker with four #14 structural screws with a 3" minimum depth structure embedment per Snow Blocker, in pattern shown in detail.

After installation, flashings may be fabricated and installed at the installer's discretion based on site-specific needs. For added protection, TRA Snow & Sun offers an optional butyl that can be applied beneath the Snow Blocker. All roof penetrations through the underlayment must be properly flashed or sealed to maintain the integrity of the roofing system.

SNOW RETENTION SYSTEMS