



## UNION

### DESCRIPTION

- A component designed for connecting tubes
- A union is used to hold tube joint connections
- Overall Dimensions: 3.07"L X VAR" T X VAR" H
- Weight: Varies

### MATERIALS

- Steel
- Stainless Steel

### COLORS/FINISHES

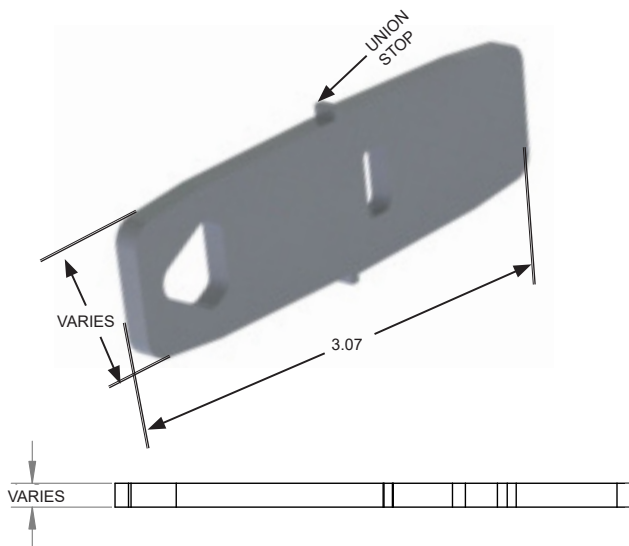
- Uncoated Steel
- Zinc Coated
- Stainless Steel (used with aluminum tubes)

**NOTE:** Due to specific job conditions, TRA Snow and Sun will only warranty a snow retention system/layout that has been designed by TRA Snow and Sun.

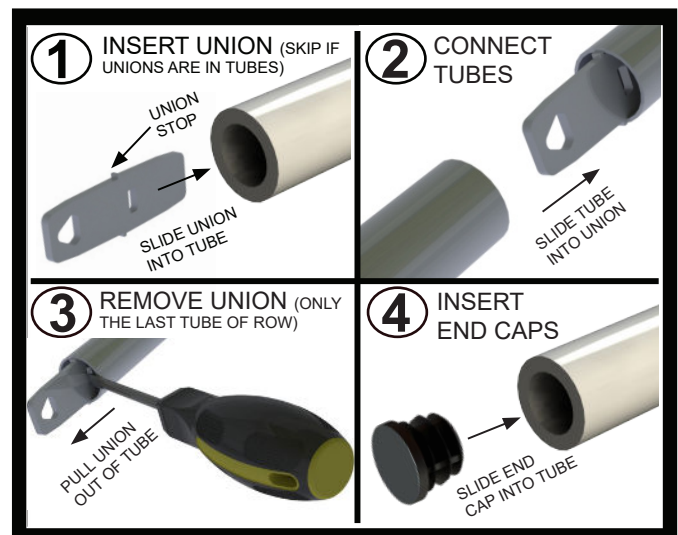


**USED ON: 1 INCH AND 1 5/16 INCH  
TUBE SNOW FENCE SYSTEMS**

\* These dimensions vary based on the tube size.



**DIMENSIONS**  
DO NOT SCALE



### INSTALLATION:

When installing a snow fence system, a union is used to join every section of tube together. Every 10' section of the tube has a union installed. If not, proceed to insert union in any direction into the tube. Using a mallet or hammer tap union to the union stop. Then join the other section of tube and continue the process until the end of a run. At the end of run, remove any unions to install end caps.

**SNOW RETENTION SYSTEMS**