



SMALL TUBE

DESCRIPTION

- Can be powder coated to match roofing material color
- Includes union for 1.0 inch OD tube
- Outside and Inside Diameter (see chart below)
- Thickness (see chart below)
- Length: 10'
- Weight: Varies
- Ice Flags available on new or existing tubes (optional)

MATERIALS

- Steel: (ASTM A500)
- Copper: (ASTM B152) (includes stainless steel insert)
- Stainless Steel: (ASTM A554)
- Aluminum: (B241)

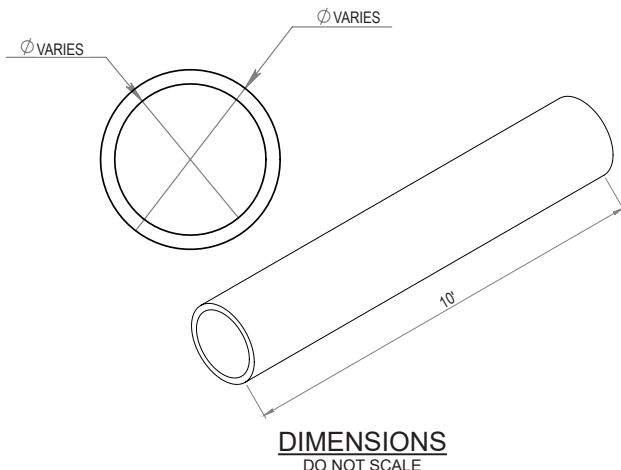
COLORS/FINISHES

- Uncoated Steel
- Zinc Coated
- Mill Finish Copper
- Mill Finish Aluminum
- Powder coating available in many colors visit <http://trasnowandsun.com/color-chart/> to see color chart

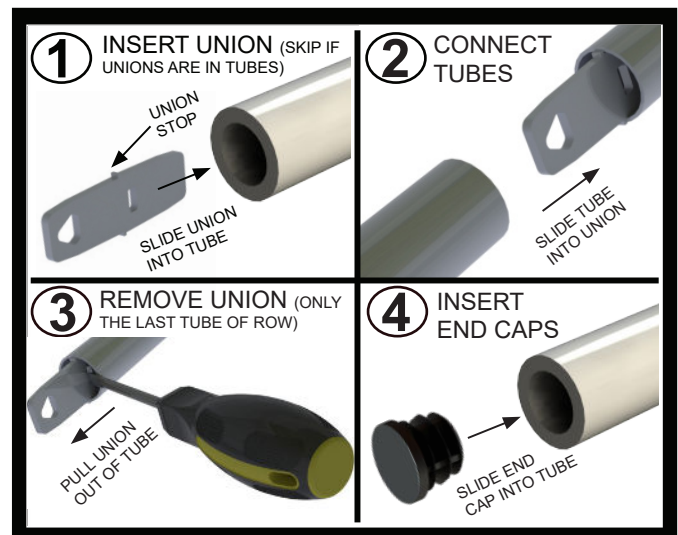
NOTE: Due to specific job conditions, TRA Snow and Sun will only warranty a snow retention system/layout that has been designed by TRA Snow and Sun.

MATERIAL DIMENSIONS CHART

MATERIAL	OUTSIDE DIAMETER	INSIDE DIAMETER	THICKNESS
Steel	1.029"	.884"	.083"
Copper (w/ SS insert)	.88"	.81"	.05"
Stainless Steel	1.056"	.824"	.116"
Aluminum	1.0"	.75"	.125"



USED ON: 1.0 INCH OD TUBE SNOW FENCE SYSTEMS



INSTALLATION:

When installing a snow fence system, a union is used to join every section of tube together. Every 10' section of tube has a union installed. Proceed to position non arrow side of the union into the tube first. Using a mallet or hammer to tap union to the stop. Then join the other section of tube and continue the process until the end of a run. At end of run, remove any unions to install end caps.

* ALL ROOF PENETRATIONS THAT GO THROUGH THE UNDERLAYMENT ARE REQUIRED TO BE FLASHED OR SEALED.

SNOW RETENTION SYSTEMS