



## SMALL ICE FLAG - 1 TUBE

### DESCRIPTION

- Installed using one carriage bolt and nut
- Rubber protection (optional)
- Powder coated to match roofing material color
- Designed for 1.0 inch OD tube
- Overall Dimensions: VAR" L X 3.000" W X VAR" H

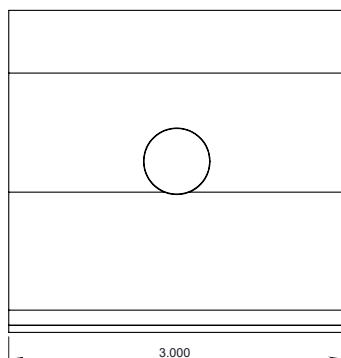
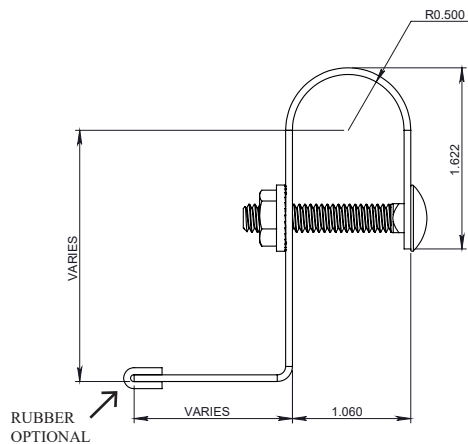
### MATERIALS

- Steel: 14 ga. (ASTM A653)
- Copper: 48 oz. (ASTM B152)
- Weathering Steel (known as CORTEN®): 16 ga. (ASTM A606)
- Stainless Steel: 16 ga. (ASTM A240)
- Aluminum: .125" Thickness (ASTM B209)

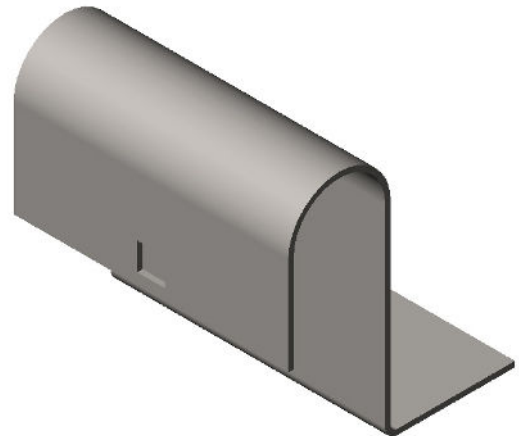
### COLORS/FINISHES

- Uncoated Steel
- Zinc Coated
- Mill Finish Copper
- Powder coating available in many colors visit <http://trasnowandsun/colorchart/> to see color chart

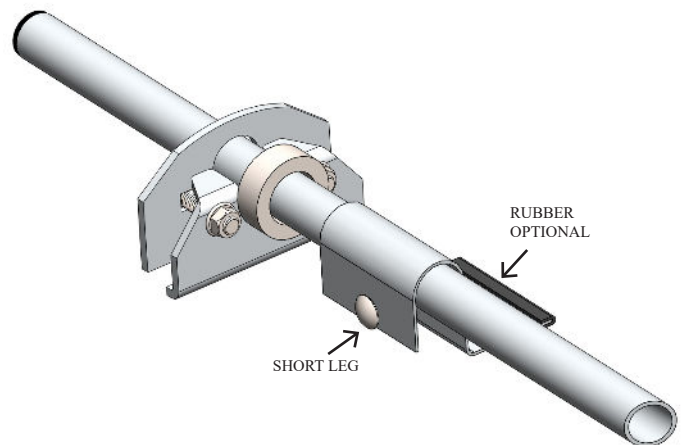
**NOTE:** Due to specific job conditions, TRA Snow and Sun will only warranty a snow retention system/layout that has been designed by TRA Snow and Sun.



**DIMENSIONS**  
DO NOT SCALE



### USED ON: 1 INCH OD TUBE SNOW FENCE SYSTEMS



### INSTALLATION:

Install ice flag with the short leg downslope while attaching a 1/4 - 20 x 2" bolt on the downhill side and the flange lock nut on the uphill side. Torque bolt to 5 lb-ft.

### MATERIAL DIMENSIONS CHART

MATERIAL	OUTSIDE DIAMETER	INSIDE DIAMETER	THICKNESS
Steel	1.029"	.884"	.083"
Copper (w/ SS insert)	.88"	.81"	.05"
Stainless Steel	1.056"	.824"	.116"
Aluminum	1.0"	.75"	.125"

### SNOW RETENTION SYSTEMS