



SMALL COLLAR

DESCRIPTION

- A collar that prevents the tube from moving between the fence system
- Installed using a set-screw (Included)
- Designed for 1.0 inch OD tube
- Overall Dimensions: Varies (Material)
- Weight: Varies (Material)

MATERIALS

- Steel
- Stainless

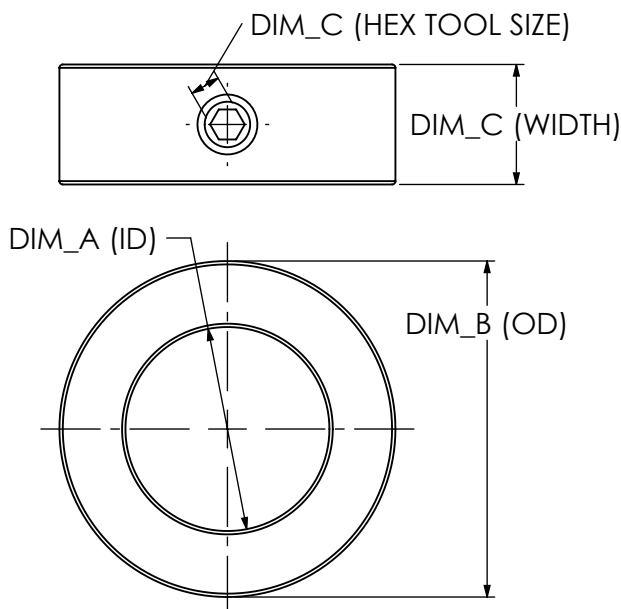
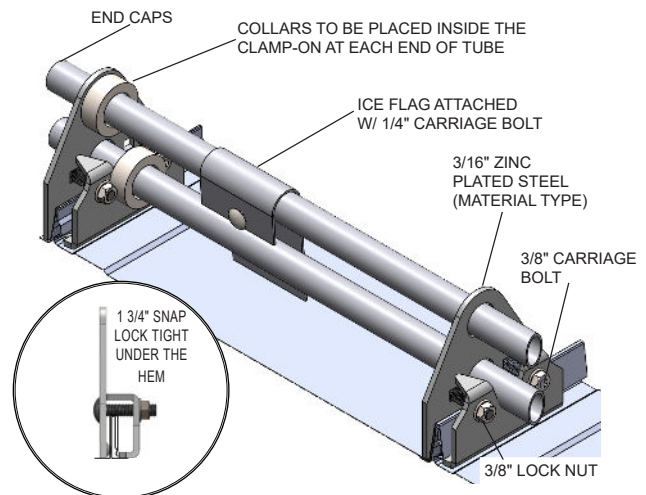
COLORS/FINISHES

- Uncoated Steel
- Stainless
- Zinc Coated
- Powder coating available in many colors visit <http://trasnowandsun/colorchart/> to see color chart

NOTE: Due to specific job conditions, TRA Snow and Sun will only warranty a snow retention system/layout that has been designed by TRA Snow and Sun.



USED ON: 1.0 INCH OD TUBE SNOW FENCE SYSTEMS



DIMENSIONS
DO NOT SCALE

INSTALLATION:

Install the collar by sliding it along the tube until it is in direct contact with the snow fence system. Torque the collar's set screw according to the specifications for the matching collar material. Refer to the material dimensions chart and installation guidelines below for proper torque values and hex tool.

MATERIAL DIMENSIONS CHART & INSTALLATION

MATERIAL	DIM (A)	DIM (B)	DIM (C)	Hex Tool	Torque Set Screw
Uncoated	1 1/16"	1 3/4"	5/8"	5/32"	5 lb-ft
Powder Coated					
Zinc Coated					
Stainless Steel (for SS Tube)					
Stainless Steel (for Copper Tube)	15/16"	1 1/2"	9/16"		

SNOW RETENTION SYSTEMS