



## LARGE TUBE

### DESCRIPTION

- Can be powder coated to match roofing material color
- Includes union for 1 5/16 inch OD tube
- Outside and Inside Diameter (see chart below)
- Thickness (see chart below)
- Length: 10'
- Weight: Varies
- Ice Flags available on new or existing tubes (optional)

### MATERIALS

- Steel: (ASTM A500)
- Copper: (ASTM B152) (includes stainless steel insert)
- Stainless Steel: (ASTM A554)
- Aluminum: (B241)

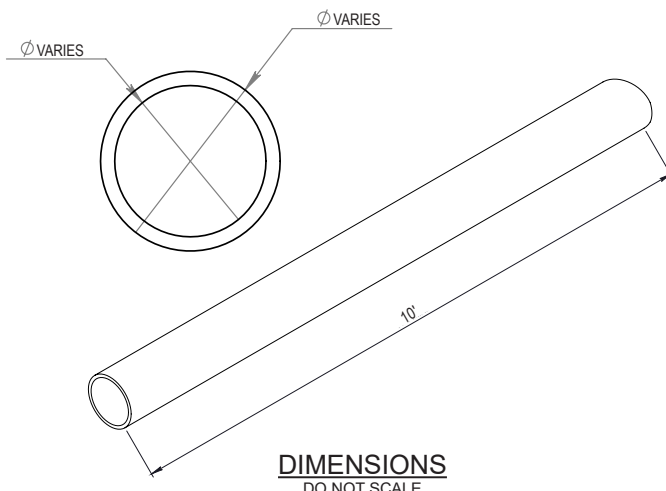
### COLORS/FINISHES

- Uncoated Steel
- Zinc Coated
- Mill Finish Copper
- Mill Finish Aluminum
- Powder coating available in many colors visit <http://trasnowandsun.com/color-chart/> to see color chart

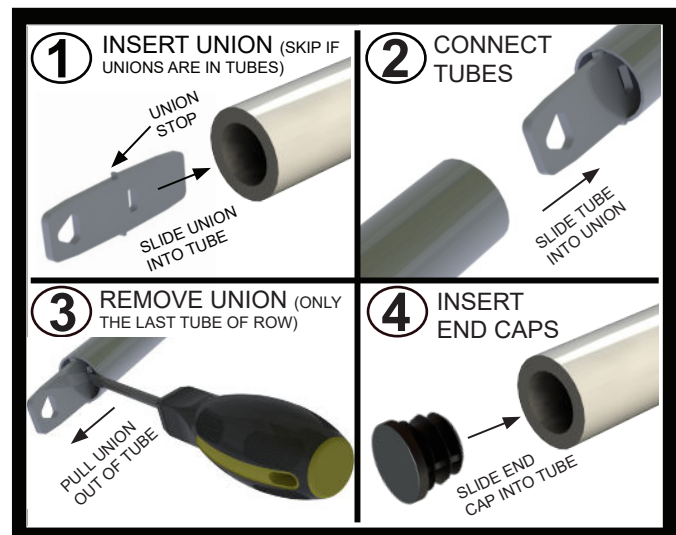
**NOTE:** Due to specific job conditions, TRA Snow and Sun will only warranty a snow retention system/layout that has been designed by TRA Snow and Sun.

MATERIAL DIMENSIONS CHART

MATERIAL	OUTSIDE DIAMETER	INSIDE DIAMETER	THICKNESS
Steel	1.315"	1.149"	.083"
Copper	1"	0.9375"	.0625"
Stainless Steel	1.315"	1.049"	.133"
Aluminum	1.315"	1.049"	.133"



### USED ON: 1 5/16 INCH OD TUBE SNOW FENCES SYSTEMS



### INSTALLATION:

When installing a snow fence system, a union is used to join every section of tube together. Every 10' section of tube has a union installed. Proceed to position non arrow side of the union into the tube first. Using a mallet or hammer to tap union to the stop. Then join the other section of tube and continue the process until the end of a run. At end of run, remove any unions to install end caps.

\* ALL ROOF PENETRATIONS THAT GO THROUGH THE UNDERLAYMENT ARE REQUIRED TO BE FLASHED OR SEALED.

## SNOW RETENTION SYSTEMS