



LARGE END CAP

DESCRIPTION

- Designed for 1 5/16 inch OD tube
- Overall Dimensions: 3/4 Inch Height; 1 1/4 Inch Diameter
- Weight: 1 ounce

MATERIALS

- Plastic

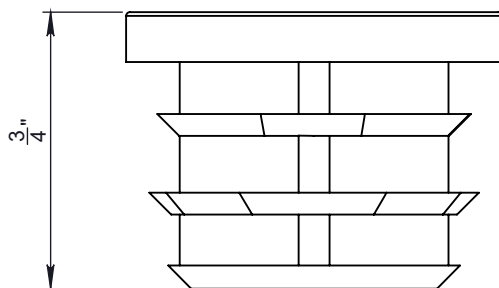
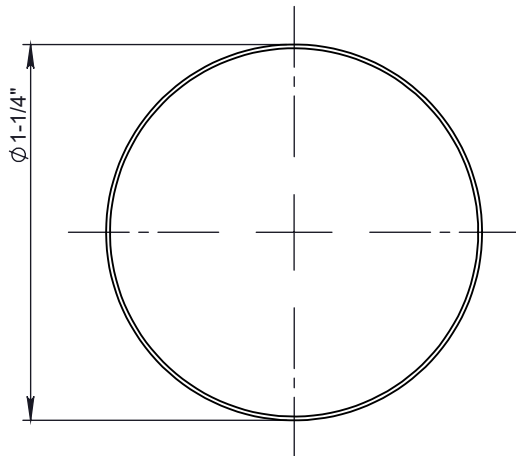
COLORS/FINISHES

- Textured LDPE black with ribbed insert

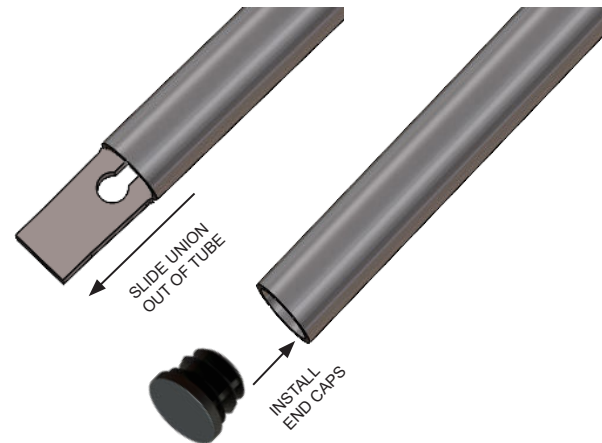
NOTE: Due to specific job conditions, TRA Snow and Sun will only warranty a snow retention system/layout that has been designed by TRA Snow and Sun.



USED ON: 1 5/16 INCH OD TUBE SNOW FENCE SYSTEMS



DIMENSIONS
DO NOT SCALE



INSTALLATION:

At the end of a run, remove any unions (if needed). Next, insert an end cap into the tube, then tap on the end cap to force them into the tube by using either a mallet or hammer (using a mallet is preferred). Continue the process until all end of runs have end caps.

SNOW RETENTION SYSTEMS