

## VersaFlash | Copper Tape

### METAL

- Highly durable and weather resistant
- Maximum formability and long term functionality
- Fully recyclable

### SOLID COPPER

- Prevents moss and organic build-up on roof surface

### CONTINUOUS CORRUGATION

- Stretching factor of 20%
- Conforms to roof surface
- Usable as wall and/or chimney flashing
- Easy installation

### BUTYL ADHESIVE SHEETS

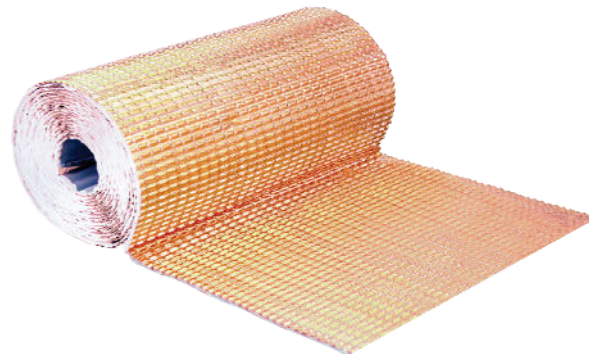
- Additional security against driving rain and snow

### TECHNICAL INFORMATION

- Body: corrugated copper
- Height Thickness: .003" with butyl adhesive strips
- Width: 9.5", 11", 13" and 15.75"
- Length: 15 ft./per roll
- Standard Color: mill finish copper

### WARRANTY

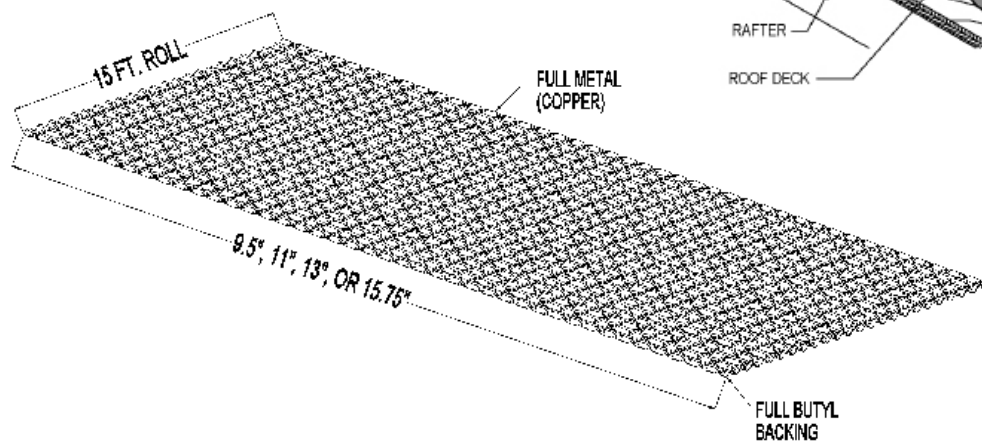
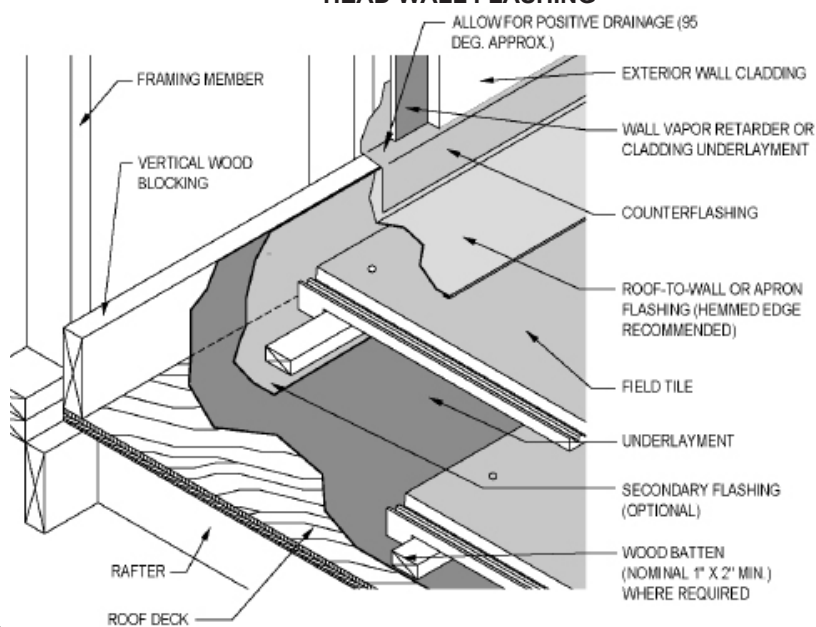
- 25 year limited warranty



### FOR NEW CONSTRUCTION AND RETROFIT

**USED ON: USED ON: TILE, METAL, STONE, SLATE, SOLAR, SIM. SLATE, BRICK, SIM. SHAKE, STUCCO**

### HEAD WALL FLASHING



**DIMENSIONS**  
DO NOT SCALE

**VENTILATION AND FLASHING SYSTEMS**

## VersaFlash | Copper Tape

STRUCTURE	Copper tape .003"thick with fully covered butyl back side	
MATERIAL FRONT	Copper 99.9 (semihard)	
MATERIAL CHARACTERISTICS	Abbreviation	SF-CU/F20 by DIN 77670 99.9% Cu: 0.01% - 0.04% Phosphorus
	Thickness	.003" inches
	Course Talent	240 - 300 N/mm <sup>2</sup> 0.2 % elongation limit R <sub>p0.2</sub> max. 180 N/mm <sup>2</sup>
	Elongation at rupture	A <sub>5</sub> min. 15 % A <sub>10</sub> min. 12 %
	Vickers hardness	min. 70 max. 90
	Brinell hardness	min. 55 max. 90
	MATERIAL BACK SIDE	Full width extruded strip of very tacky, sealant/adhesive based on butyl rubber covered with a release film.
MATERIAL CHARACTERISTICS (OUTSIDE)	Specific weight:	1.49 g/ml
	Temperature resistance:	continuously from -50°C bis +80°C
	Plasticity:	70 < p > 100 acc. norm NFP 85513
	Plastic flow:	0 mm bei 23 °C und 0 mm bei 70 ° acc. norm NFP 85501
	Drying substance:	100%
	Shearing stress-resisted:	speed 100 mm/mm 0.107 Pa
	Tearing off resistance:	speed 100 mm/mm 0.233 Pa
	Elongation at rupture:	> 500 %
	Steam permeability:	impermeable
	Migration of components:	no migration no spotting
	Compatibility with paints:	can be re-painted
	Resistance:	Water excellent Seal water excellent House detergent very good Weak acids good Basen thinly very good Alcohol moderately Organic solvents poor