

# 1 RAIL STANDING SEAM SNOW FENCE USED ON: STANDING SEAM METAL



DOUBLE  
LOCK



SINGLE  
LOCK "L"

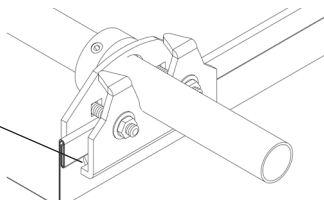


1 3/4"  $\leq$  X"  
SNAP LOCK

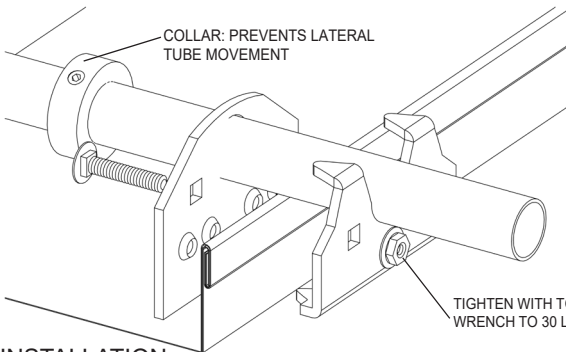


1" - 1 1/2"  
SNAP LOCK

CLAMP TEETH TO  
BE PLACED BELOW  
PANEL HEM



COLLAR: PREVENTS LATERAL  
TUBE MOVEMENT



TIGHTEN WITH TORQUE  
WRENCH TO 30 LB-FT

**INSTALLATION:**  
CLAMP THE SNOW FENCE TO THE RIB BY USING A  
TORQUE WRENCH WITH 30 LB-FT OF PRESSURE  
APPLIED TO EACH BOLT. FOR SPECIFIC ENGINEER-  
ING & PLACEMENT CALL TRA SNOW & SUN AT  
801-756-8666.