



SNOW BRACKET™ L

DESCRIPTION

- Designed for asphalt shingles, cedar shingles, wood shakes, slate, simulated slate, and flat seam metal
- Powder coated to match roofing material color
- Overall dimensions: 3"L X 2.75"W X 3" H

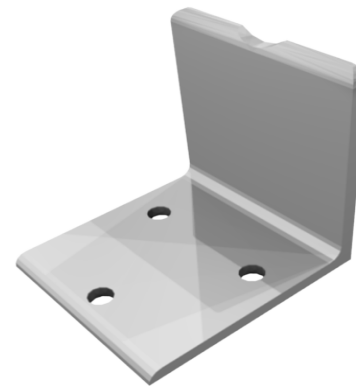
MATERIALS

- Steel :: 16 ga (ASTM A879)
- Copper :: 48 oz (ASTM B152)
- Cor-Ten® :: 16 ga (ASTM A606)
- Stainless Steel :: 16 ga (ASTM A240)
- Aluminum :: .063" (H32 - ASTM B209)

COLORS/FINISHES

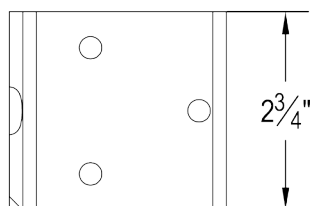
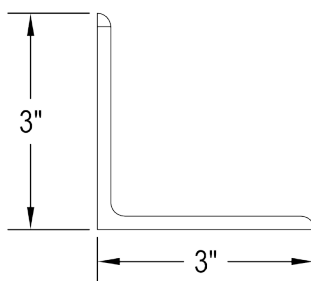
- Electro-galvanized steel
- Hot-dipped galvanized steel
- Mill finish Aluminum
- Mill finish Copper
- Mill finish Cor-Ten®
- Powder coating available in many colors visit <http://trasnowandsun.com/color-chart/> to see color chart

NOTE: Due to specific job conditions, TRA Snow and Sun will only warranty a snow retention system/layout that has been designed by TRA Snow and Sun.



FOR NEW CONSTRUCTION OR RETROFIT

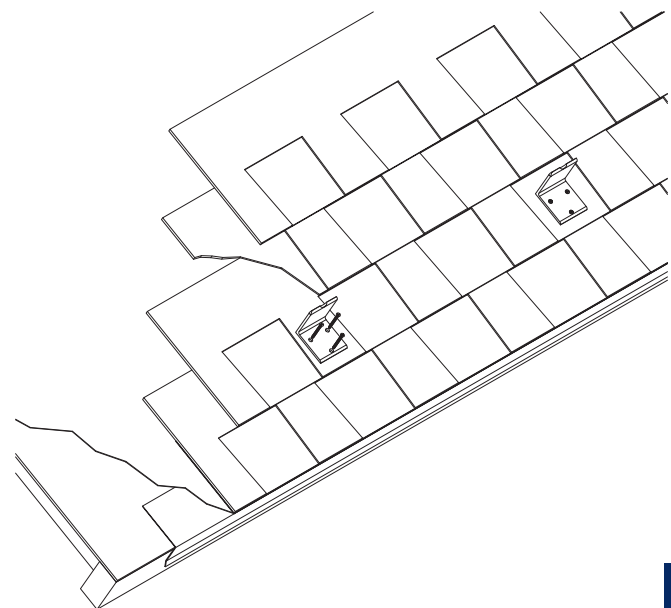
USED ON: ASPHALT SHINGLES, CEDAR SHINGLES, WOOD SHAKES, SLATE, SIMULATED SLATE, & FLAT SEAM METAL



DIMENSIONS

DO NOT SCALE

*Dimensions shown are in inches.



INSTALLATION

DO NOT SCALE

SNOW RETENTION SYSTEMS