



3/4" PIPE

DESCRIPTION

- Superior strength
- Can be powder coated to match roofing material color
- Outside and Inside Diameter (see chart below)
- Thickness (see chart below)
- Length: 10'

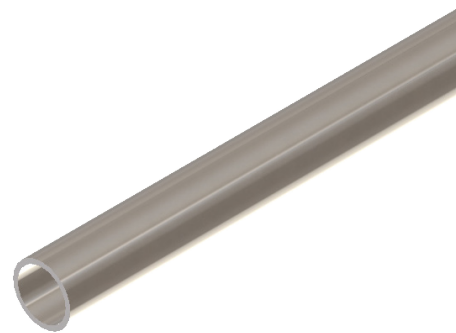
MATERIALS

- Steel :: (ASTM A500)
- Copper :: (ASTM B152) (includes stainless steel insert)
- Stainless Steel :: (ASTM A554)
- Aluminum :: (B241)

COLORS/FINISHES

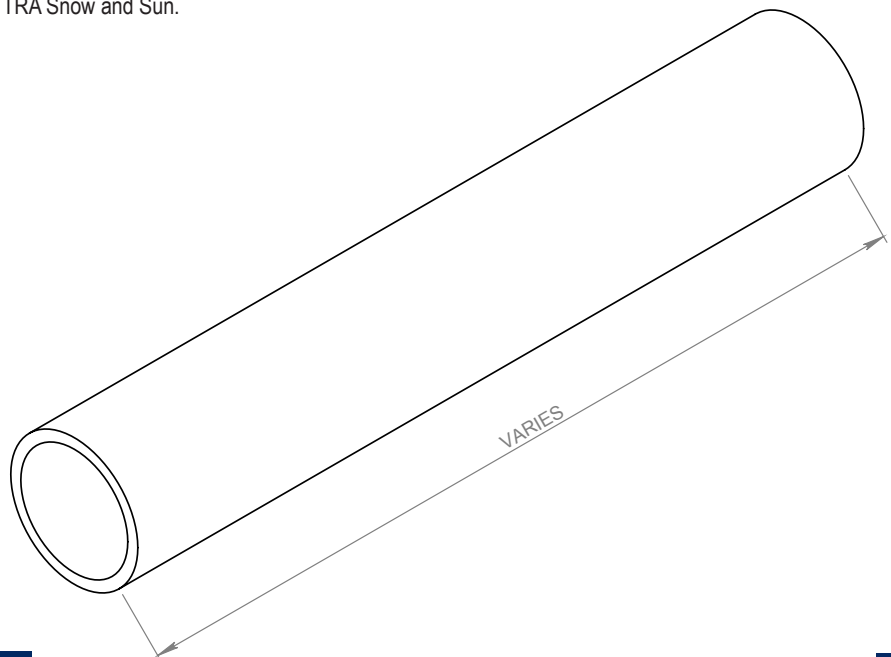
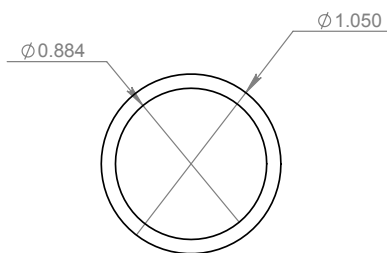
- Raw steel
- Electro-galvanized steel
- Hot-dipped galvanized steel
- Mill finish Copper
- Mill finish Aluminum
- Powder coating available in many colors visit <http://trasnowandsun.com/color-chart/> to see color chart

NOTE: Due to specific job conditions, TRA Snow and Sun will only warranty a snow retention system/layout that has been designed by TRA Snow and Sun.



3/4" PIPE

USED ON: CLAMP ON SERIES AND MANY SNOW FENCES



MATERIAL DIMENSIONS CHART

MATERIAL	OUTSIDE DIAMETER	INSIDE DIAMETER	THICKNESS
Steel	1.05"	.884"	.083"
Copper	.88"	.81"	.05"
Stainless Steel	1.056"	.824"	.116"
Aluminum	1.0"	.75"	.125"

SNOW RETENTION SYSTEMS