



1" PIPE

DESCRIPTION

- Superior strength
- Can be powder coated to match roofing material color
- Steel pipe includes 1 Union
- Outside and Inside Diameter (see chart below)
- Thickness (see chart below)
- Length: 10'

MATERIALS

- Steel :: (ASTM A500)
- Copper :: (ASTM B152) (includes stainless steel insert)
- Stainless Steel :: (ASTM A554)
- Aluminum :: (B241)

COLORS/FINISHES

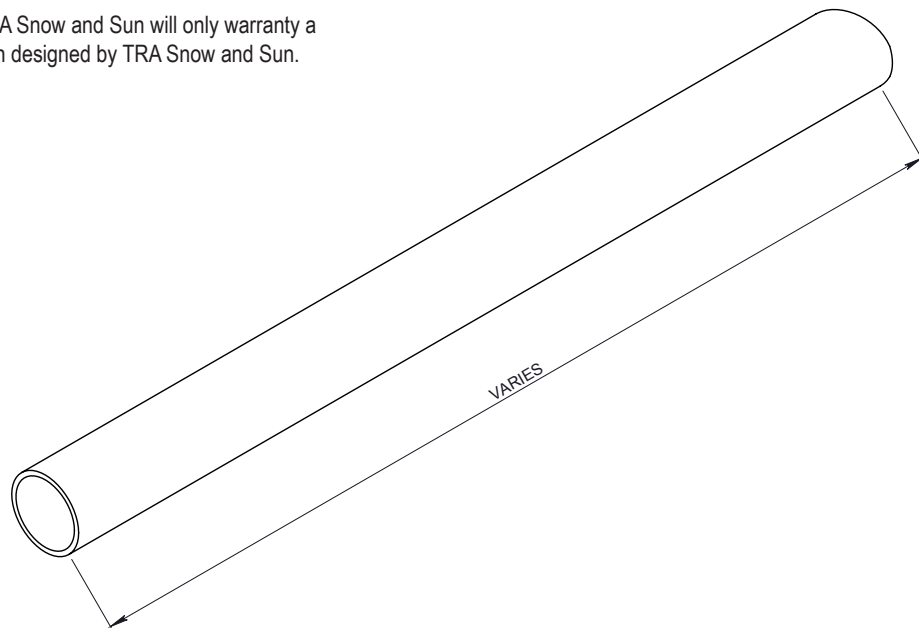
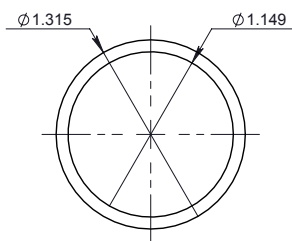
- Raw steel
- Electro-galvanized steel
- Hot-dipped galvanized steel
- Mill finish Copper
- Mill finish Aluminum
- Powder coating available in many colors visit <http://trasnowandsun.com/color-chart/> to see color chart



1" PIPE

USED ON: DECK MOUNT SNOW FENCES

NOTE: Due to specific job conditions, TRA Snow and Sun will only warranty a snow retention system/layout that has been designed by TRA Snow and Sun.



MATERIAL DIMENSIONS CHART

MATERIAL	OUTSIDE DIAMETER	INSIDE DIAMETER	THICKNESS
Steel	1.315"	1.149"	.083"
Copper	1.125"	1"	.0625"
Stainless Steel	1.315"	1.049"	.133"
Aluminum	1.315"	1.049"	.133"