



SNOW BRACKET D - APEX

DESCRIPTION

- Designed for new construction on simulated shake, simulated slate and asphalt shingles
- Installed using (5) roofing nails that must penetrate the sheathing or by using (5) #8 stainless steel screws
- Can be powder coated to match roofing material color
- Overall dimensions: 12"L X 2.250"W X 3"H

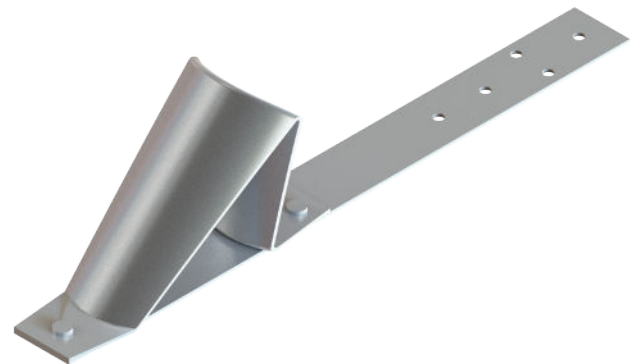
MATERIALS

- Zinc Coated Steel: 16 ga (ASTM A653)
- Copper: 48 oz (ASTM B152)
- Stainless Steel: 16 ga (ASTM A240)

COLORS/FINISHES

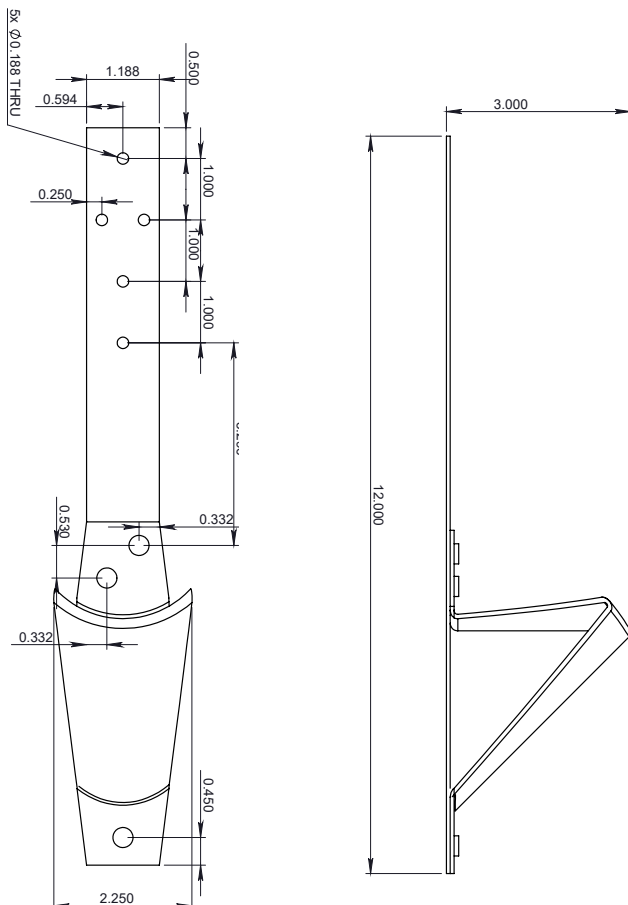
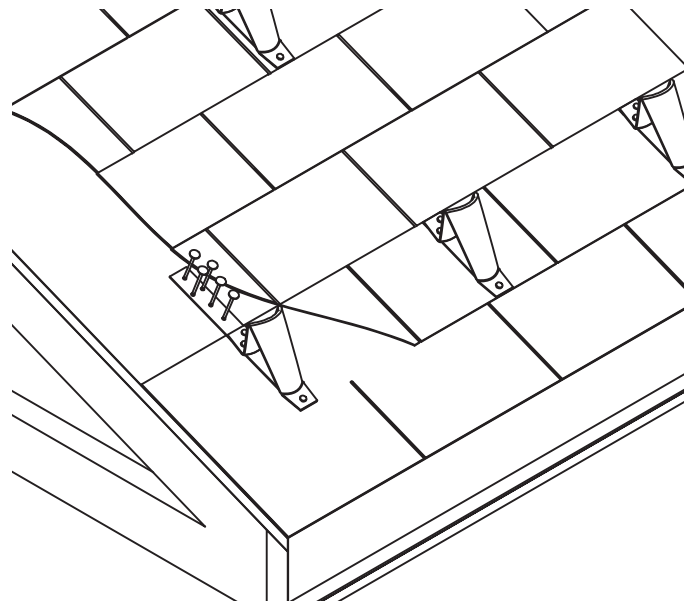
- Zinc Plated
- Powder coating available in many colors visit <http://trasnowandsun.com/color-chart/> to see color chart

NOTE: Due to specific job conditions, TRA Snow and Sun will only warranty a snow retention system/layout that has been designed by TRA Snow and Sun.



FOR NEW CONSTRUCTION

USED ON: SIMULATED SHAKE, SIMULATED SLATE AND ASPHALT SHINGLES



DIMENSIONS
DO NOT SCALE

INSTALLATION:
BRACKET IS INSTALLED WITH FIVE ROOFING NAILS THAT MUST PENETRATE THE SHEATHING OR BY USING FIVE # 8 STAINLESS STEEL SCREWS WITH TRIANGULAR END OF BRACKET AT EAVE END OF ASPHALT SHINGLE AND UPPER END UNDER SHINGLE IN COURSE ABOVE.

SNOW RETENTION SYSTEMS