



GUTTER BRACKET

DESCRIPTION

- Bracket to hold gutter to fascia
- 5" or 6" available to fit most half-round gutters
- Can be powder coated to match roofing material color

MATERIALS

- Steel: 3/16" (ASTM A36)
- Copper: 3/16" (ASTM B124)

COLORS/FINISHES

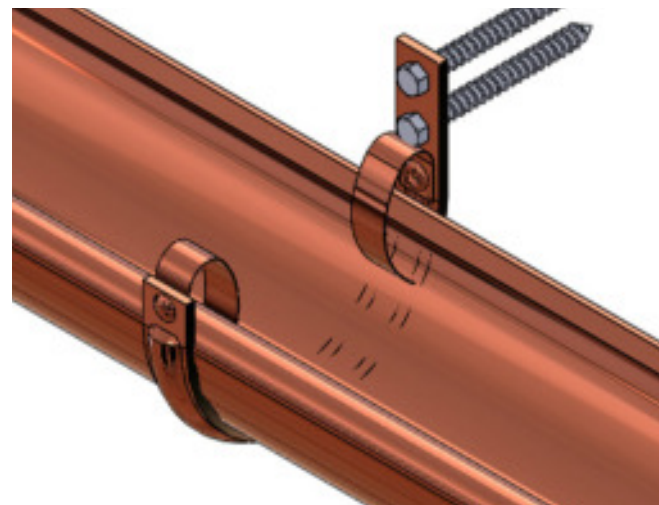
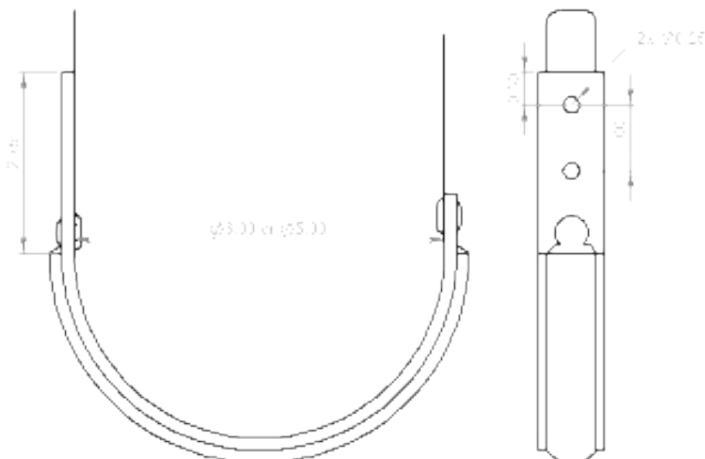
- Electro-galvanized steel
- Mill finish Copper
- Powder coating available in many colors visit <http://trasnowandsun.com/color-chart/> to see color chart

NOTE: Due to specific job conditions, TRA Snow and Sun will only warranty a snow retention system/layout that has been designed by TRA Snow and Sun.



FOR NEW CONSTRUCTION OR RETROFIT

USED ON: HALF-ROUND GUTTERS



INSTALLATION:

Gutter Brackets are placed on every foot with two screws directly into the fascia board.

DIMENSIONS
DO NOT SCALE